



CETRIS®

CETRIS® BASIC



📍 CIDEM Hranice, a.s., divize CETRIS  
Nová 223, 753 01 Hranice I - Město

✉️ [cegris@cegris.cz](mailto:cegris@cegris.cz)

🌐 [www.cegris.cz](http://www.cegris.cz)



A4/IMG/ENG/1000/9-2023

# PRODUCT OVERVIEW

 ecological  
cement bonded particleboard



# Using CETRIS® boards

*Fire resistant applications*



*Facades*



*Floors*



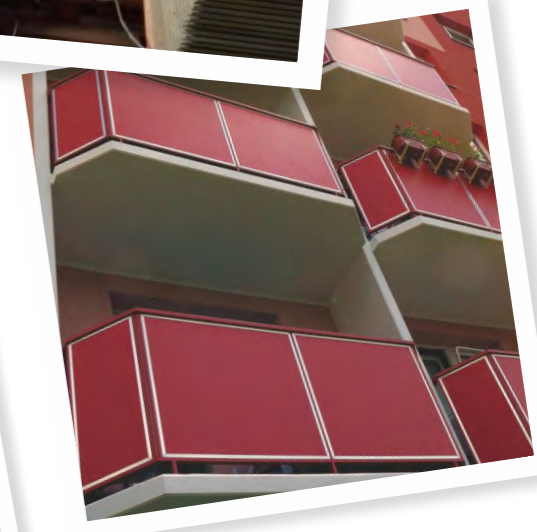
*Roofs*



*Plinths*



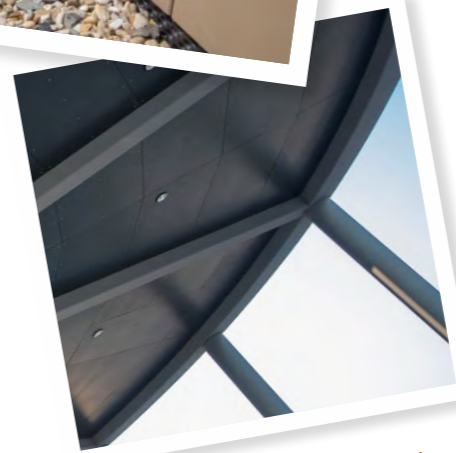
*Balconies*



*Walls*



*Ceilings*



*Permanent shuttering*



*Road constructions*



*Hobby*



ISO 9001



For more information, please visit our Web site [www.cetris.cz](http://www.cetris.cz) or ask for printed documents and DVD with detailed technical data.



## Boards without surface finish



### CETRIS® BASIC

is a cement bonded particleboard with smooth natural grey cement surface. It is produced in standard thicknesses of 8, 10, 12, 14, 16, 18, 20, 22, 24, 26, 28, 30, 32 mm. Upon prior agreement it is also possible to deliver the following thicknesses: 34, 36, 38 and 40 mm. The basic size of the board is 3,350 x 1,250 mm. We deliver the boards cut to the sizes specified by the customer, with rounded edge or chamfered edge under the 45° angle, milled starting from the 12-mm thickness with half-groove, starting from the 16-mm thickness with tongue and groove. The boards may also be delivered with pre-drilled holes.



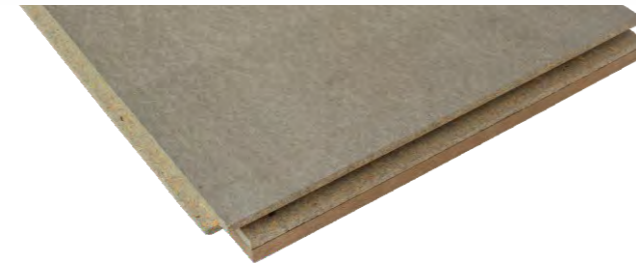
### CETRIS® PD

is a cement bonded particleboard with tongue and groove connection system and smooth surface. The cement bonded particleboard of 1,250 x 625 mm (including the tongue) is designed for dry flooring technology. The following thicknesses are offered as standard: 16, 18, 20, 22, 24, 26, 28 mm. There is tongue and groove on the perimeter of the boards, and they are to be laid over beams or used in restoration of floors.



### CETRIS® PDB

is sanded cement bonded particleboard with tongue and groove connection system and smooth surface. It is calibrated by sanding with the size of 1250 x 625 mm (including the tongue) for dry floor technologies. The adjustment reduces thickness tolerance to +/- 0.3 mm. The following thicknesses are offered as standard: 16, 18, 20, 22, 24, 26, 28 mm (on the basis of agreement 30-32-34-36-38mm). There is a tongue and groove on the perimeter of the boards and they are to be laid over beams or used in restoration of floors.



### CETRIS® PDI

is a two-ply panel consisting of a cement bonded particleboard CETRIS® thickness 20 or 22 mm glued together with a fibre board insulation thickness 12 mm. The edges of the board are milled; they have tongue and groove features on the sides. The board surface is smooth. The cement bonded particleboard of 1,220 x 610 mm (including the tongue) is designed for dry flooring technology. Boards are supplied 32 or 34 mm thick. Boards have tongue and groove features on the sides and are designed for laying on an even, flat base (ceiling structure, floor joists). For detailed information about the floor board use see here.



### CETRIS® HOBBY Flowerbed curb

is a cement bonded particleboard CETRIS® of rectangular formate and thickness 28 mm with the size of 1250 x 250 mm, cut from CETRIS® BASIC board. The top edge is provided with a double-edge, side edges are milled to allow joining (tongue+groove). Boards may be cut, drilled or milled. Boards may be set in concrete, or directly in a groove to be filled with soil later.



### CETRIS® PROFIL

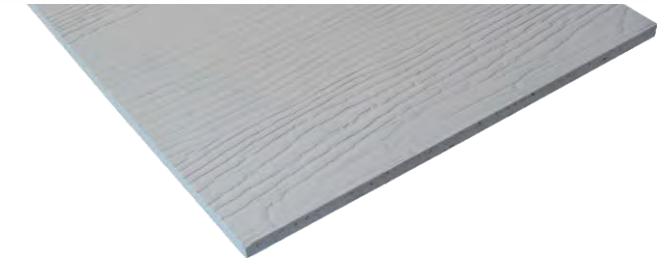
is a cement bonded particleboard with relief grey cement surface. Cement bonded particleboard of thickness 10 or 12 mm, with relief surface imitating wood or slate structure. The basic size of the board is 3,350 x 1,250 mm. The provided services are the same as in the case of CETRIS® BASIC. CETRIS® PROFIL boards are mainly used as exterior and interior facade cladding for their decorative appearance.

## Boards with surface finish



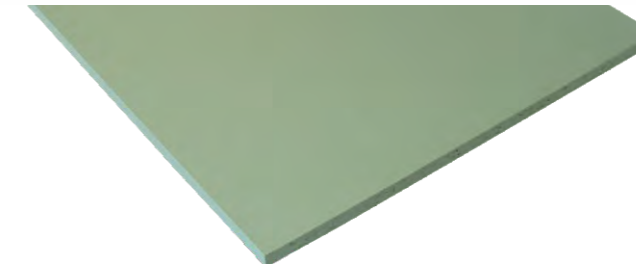
### CETRIS® PLUS

is a cement bonded particleboard with smooth surface, primed with a white primer. The thickness is 8-32 mm. The primer is applied on both sides including edges. The back side primer is less covering with irregular texture. Basic board size is 3,350 x 1,250 mm. The provided services are the same as in the case of CETRIS® BASIC. The primer coat improves the bonding power between the board and the surface finish, reduces rate of absorption and consumption of the paint for final coat.



### CETRIS® PROFIL PLUS

is a cement bonded particleboard with relief surface, primed with a white primer. The thickness is 10 or 12 mm, with relief surface imitating wood or slate structure. The board is treated with white primer coat. The primer is applied on both sides including edges. The back side primer is less covering with irregular texture. The basic size of the board is 3,350 x 1,250 mm. The provided services are the same as in the case of CETRIS® BASIC. The primer coat improves the bonding power between the board and the surface finish, reduces rate of absorption and consumption of the paint for final coat.



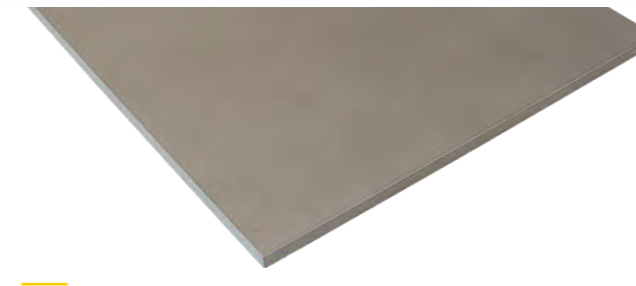
### CETRIS® FINISH

is a cement bonded particleboard of thickness 10 - 16 mm with smooth surface provided with a primer and a final top coat in shades pursuant to colour tables RAL, NCS. The back side of CETRIS® FINISH cement bonded particleboards is provided with a protective primer with irregular texture and appearance and insufficient coverage. The colour shade of the coat is not specific, therefore the requirement for a white or transparent shade needs to be specified in the order in advance.



### CETRIS® PROFIL FINISH

is a cement bonded particleboard with relief surface provided with a primer and a final top coat. The thickness is 10 or 12 mm, with relief surface imitating wood or slate structure. The board is treated with a primer and a final colour in shades as per the colour tables RAL, NCS. Basic board size is 3 350 x 1 250 mm. The provided services are the same as in the case of CETRIS® BASIC. CETRIS® PROFIL FINISH boards are mainly used as exterior and interior facade cladding for their decorative appearance. The back side of boards is provided with a protective primer with irregular texture and appearance and insufficient coverage.



### CETRIS® LASUR

is a cement bonded particleboard of thickness 10 - 16 mm with smooth surface provided with a primer and a final acrylic varnish glazing in shades according to the colour tables. The glazing top coat provides a solid but non-uniform appearance. The basic size of the board is 3,350 x 1,250 mm. CETRIS® LASUR boards are mainly used as exterior facade cladding. The back side of CETRIS® LASUR cement bonded particleboards is provided with a protective primer with irregular texture and appearance and insufficient coverage.



### CETRIS® DEKOR

is a cement bonded particleboard of thickness 12 and 14 mm and size 1250 x 625 mm provided with acrylic decorative mosaic plaster. CETRIS® DEKOR boards are supplied in shades according to colour table for CETRIS® DEKOR boards. In the case of bigger orders other thicknesses and formates of CETRIS® DEKOR boards can be agreed individually. The boards are mainly used as exterior facade cladding, for vertical cladding of base mouldings, facades, railing fills and soffits (under roof ceiling).

## New and special products



### CETRIS® AKUSTIC

CETRIS® AKUSTIC is a cement-bonded particleboard with drilled/milled holes and a smooth cement surface. The board is made by processing (drilling regularly spaced holes) of CETRIS® BASIC board. This treatment achieves improved acoustic properties in addition to the existing high mechanical parameters. If the full-base CETRIS® board is particularly distinguished by its high air-tightness value, the drilled board serves as an absorbent acoustic cladding element. CETRIS® AKUSTIC boards are particularly suitable for sporting facilities, rooms with variable temperature and humidity, and buildings with specific requirements.



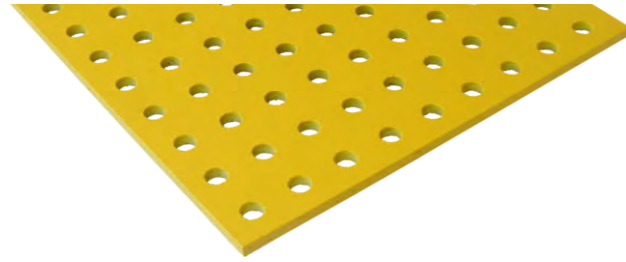
### CETRIS® INCOL

is a cement bonded particleboard with smooth surface primed through with black pigment. Standard thickness 12 mm. Basic board size 3,350 x 1,250 mm. The boards are supplied cut to the size required by the customer, with rounded or 45° bevelled edge, milled with semi-groove, from board thickness. Pre-drilled holes may be made in the boards on request.



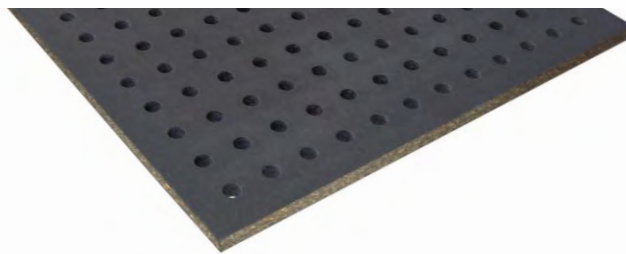
### CETRIS® PROFIL LASUR

CETRIS® PROFIL LASUR is a cement-bonded particleboard with a relief imitating wood or slate structure, provided with a primer and a final varnish glazing. The varnish-glaze surface does not create unified and compact surface. The basic board size is 3 350 x 1 250 mm, thicknesses 10 and 12 mm. The services provided are identical with those provided for CETRIS® PROFIL boards. CETRIS® PROFIL LASUR boards are mainly used as facade cladding boards in exteriors.



### CETRIS® AKUSTIC FINISH

CETRIS® AKUSTIC FINISH cement-bonded particleboard is made by processing (with drilled/milled holes) of CETRIS® BASIC board. The basic size of the board is 1 250 x 625 mm, thickness 8 and 10 mm. The surface of the board is smooth, coated with a basic primer and final top coat pursuant to colour tables RAL or NCS. CETRIS® AKUSTIC FINISH serves as an absorbent acoustic cladding, especially for sporting facilities, rooms with variable temperature and humidity, and buildings with specific requirements.



### CETRIS® AKUSTIC INCOL

is a cement bonded particleboard with smooth surface primed through with black pigment with drilled/milled holes. Standard thickness 12 mm. Basic board size 1,250x625 mm. CETRIS® AKUSTIC INCOL boards re used as part of noise-absorbing acoustic insulation structures in connection with load-bearing structures, mineral wool and acoustic textile.



### CETRIS® PDP

CETRIS® PDP is a cement-bonded particleboard with a smooth milled surface - a 45 mm wide semi-groove around the perimeter. The maximum size of CETRIS® PDP is up to 1,250 x 1,000 mm (including the half groove) and is designed for lightweight floating floor technology for laying on insulation. The boards are only available in 22 mm thickness.

## Advantages of CETRIS® boards



### Environment friendly

CETRIS® cement bonded particleboards are ecological and environment friendly. They contain no hazardous substances such as asbestos and formaldehyde and they are resistant to petrol and oils.



### Frost-resistant

CETRIS® cement bonded particleboards are frost resistant, tested successfully by 100 freezing-defrosting cycles pursuant to ČSN EN 1328 standard.



### Fire resistant

CETRIS® cement bonded particleboards without surface treatment are fire-resistant and their classification according to the reaction to fire class according to the European standard EN 13 501-1 is A2-s1, d0-non-combustible.



### Hygienic harmless

CETRIS® boards are hygienic harmless, odourless and contain no hazardous substances.



### Fungi and mould resistant

Moulds are not formed on the board surface thanks to the fact that CETRIS® board is resistant to humidity.



### Insect resistant

CETRIS® cement bonded particleboards are absolutely insect resistant thanks to their cement content.



### Perfect sound barrier

CETRIS® boards provide for acoustic insulation (sound transmission loss 30 – 35 dB).



### Weather resistant

CETRIS® cement bonded particleboard is the best material for wet rooms and weather-exposed exteriors for its excellent humidity resistance.

## CETRIS® Board Composition (in weight percent)



19% wood



69% cement



10% water



2% hydration additives



Join us on Facebook. You not only get professional news, but also exclusive reference photographs and the option to contact us directly with any query.



Visit our channel on the YouTube portal with many interesting presentations and assembly videos. You will find the links on our new website [www.cetris.cz](http://www.cetris.cz).